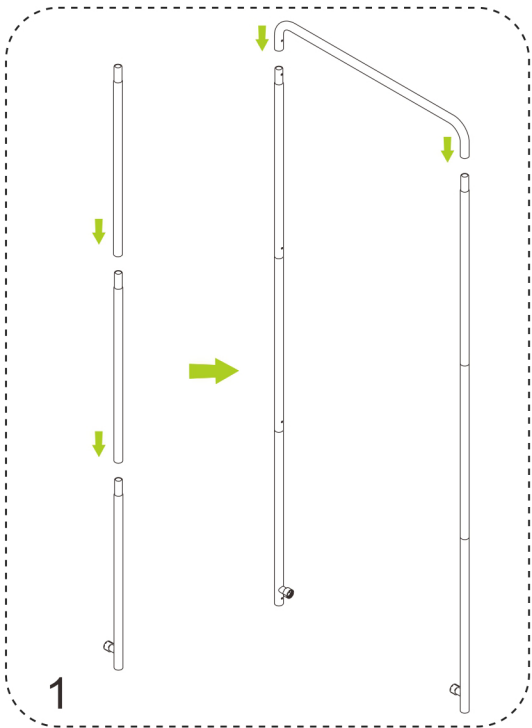
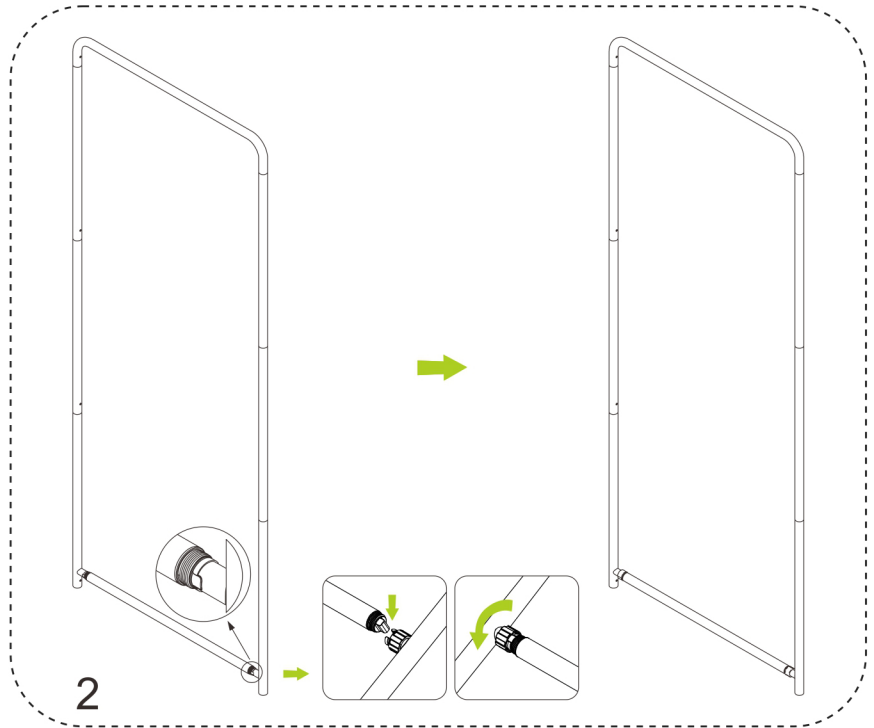


Straight tension fabric banner stand



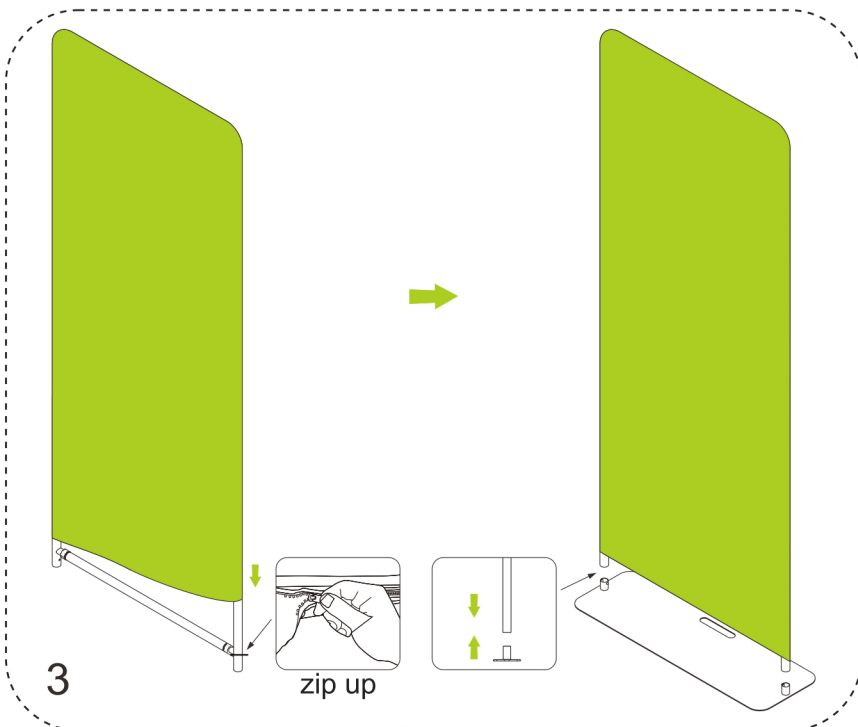
1

To connect all the aluminium tubes according to the numbering



2

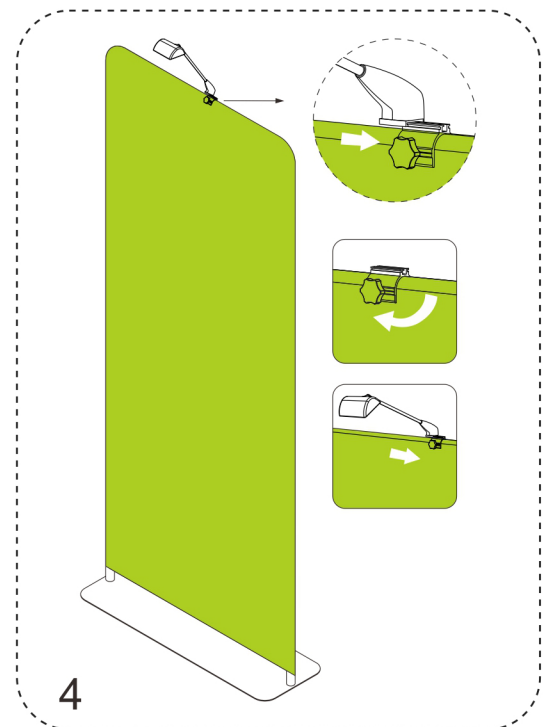
Using the big plastic screw parts to fasten the bottom cross bar



3

zip up

To wrap the fabric banner on the frame and zip up, afterwards install whole display stand to the base.



4

To install the lights clips to the top of display stand and fasten by screw, then slip the lights in position